



Replacement Parts List No. 700052000
Revision E 05/2019

Daikin

**SmartSource[®] Compact Vertical
Water Source Heat Pump**

WGCV
007, 009, 012
Design 1

Contents

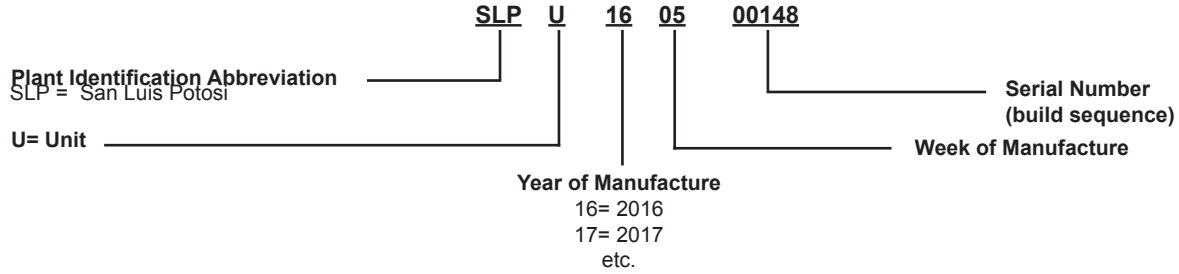
Parts List Revision History.....	3
Nomenclature	
Serial Number.....	4
Model Number.....	4
Electrical Legend.....	5
Blower Fan Assembly	
PSC Motor, Housing & Wheel.....	6
ECM Motor, Housing & Wheel.....	7
Refrigeration Circuit	
Diagrams.....	8
Components.....	9 - 10
Control Box	
Microtech III Controls	
Diagrams.....	11
Components.....	12
MTIII Control Board Label Location.....	13
Field Installed Accessories.....	14 - 17
Critical Parts List.....	CPL1

Parts List Revision History

Rev.	Date	Description
NEW	06/16	NEW
A	07/17	<p>Page 6- Delete Capacitors, Bracket & boot- move to control box.</p> <p>Page 7- Add Grommet p/ns 910126826 & 910126827. Add Blower Housing p/n 060699602. Delete fasteners p/ns 04929302, 105915405, 802012067, 06652401.</p> <p>Page 9- Add size 007 Evap Coil, LH p/n 670211324. Change 208/230V Compressor size 009 p/n 910161439 to 910161440.</p> <p>Page 11- Added drawing of "No PSC Used". Bub 72 C01 note added.</p> <p>Page 12- Delete DCS p/n 910150559. Add Ref #72. Chart redone without voltage columns.</p> <p>Page 14- Add Thermostats & Sensor p/ns 668375301, 668375401, 667720401, and 107096010.</p> <p>Page 15- Add WSE Coil p/n 670213502. Change Hydronic Coil Assy p/n 670226006 to 670226306.</p> <p>Pages 16- Add "Auto Flow Supply and Return w/Ball Valves and Strainer" p/ns for 3 foot hose kits. Delete Hose Kits Jumper Jumper Hose Kit w/90° Adapter p/n 669483101.</p> <p>CPL1- Update revision. Change 208/230V Compressor size 009 p/n 910161439 to 910161440. Add Wheel Blower p/n 910123343.</p>
B	11/17	<p>Page 9- Change reversing valve p/n 910124937 to 910198407 & 910124938. Change solenoid p/n 106694207 to 910198415. Change low pressure switch p/n 107225101 to 910171267.</p> <p>Pages 14- 17 Numerous changes to Field Installed Accessories. Add sensor adapter plates, sensors, and touchscreen thermostats. Add Jumper Hose p/n 669483101.</p> <p>CPL1- Update revision.</p>
C	09/18	<p>Page 4- Change Code 21 to Always 0.</p> <p>Page 9- Delete Reversing Valve p/n 910124938. Add adater p/n 106474901.</p> <p>Page 12- Add AN1, and AN2 for Annunciator p/n 668395201. Change Contactor p/n 910140339 to 910199934.</p> <p>Pages 14-17 Numerous format changes. Change Filters from Kit #s to individual p/ns. Delete Tstat p/ns 668375301 & 668375401. Change 3-Way valve p/n 107179702 to 107179701.</p> <p>CPL1- Update revision.</p>
D	10/18	<p>Page 12- Add footnote for disconnect switch and delete unit size.</p> <p>CPL1- Update revision</p>
E	05/19	<p>Page 8- Change compressor mount detail dwg.</p> <p>Page 14- 17 Change H-8 Harness p/n 910107989 to 910255908 & 10 pack p/n 910145646.</p> <p>CPL1- Update revision.</p>

Nomenclature

Serial Number



Model Number

	WGCV	012	E	1	RT	G	M	P	B	00	1	0	0	0	S	50	0	0	0
Code	01 - 03	04	05	06	07	08	09	10	11	12	13	14	15	16	17	18	19	20	21

Code 01: Unit Type

W= Water Source Heat Pump

Code 02: Model Type

GC= SmartSource, Compact Single Stage

Code 03: Configuration

V= Vertical

Code 04: Unit Size

007= 7000 BtuH Nominal Cooling

009= 9000 BtuH Nominal Cooling

012= 12000 BtuH Nominal Cooling

Code 05: Voltage

A= 115/60/1

E= 208-230/60/1

J= 265/60/1

Code 06: Design Series

1= Design Series 1

Code 07: Return/Discharge Air

LT= Left Hand Return/Top Discharge

RT= Right Hand Return/Top Discharge

Code 08: Water Coil Type

C= Copper Inner Tube

S= Cupro-Nickel Inner Tube

G= Geothermal- Copper Inner Tube

J= Geothermal- Cupro-Nickel Inner Tube

Code 09: Unit Control

M= Microtech III Base Controller

L= Microtech III Base Controller with Lon

B= Microtech III Base Controller with BACnet

F= Microtech III Integrated System

Code 10: Fan Motor

P= PSC

T= ECM Constant Torque

Code 11: Insulation (Compressor Side / Airside)

B= Basic Standard- Fiberglass/Fiberglass

I= IAQ- Closed Cell Foam/Closed Cell Foam

D= Sound Package- Dual Layer Fiberglass/Dual Layer Fiberglass

Code 12: Options

WE= Waterside Economizer

HH= Hydronic Heat

00= None

Code 13: Filters & Racks

1= Standard 1" Rail 1" Filter, Throwaway

2= 2" Rack- 2" Filter, MERV 8

3= 2" Rack- 2" Filter, Throwaway

4= 4" Rack- 4" Filter, MERV 13

5= 4" Rack- 2" Filter, Throwaway

Code 14: Piping Package

0= None

Code 15: Electric Heat Size

0= None

P= 24V Single Stage Control

Code 16: Freeze Fault Protection

0= None

F= Freeze Fault Protection

Code 17: Standard or Special

S= Standard

X= Special

Code 18: Transformer

50= 50 VA Transformer

75= 75 VA Transformer

Code 19: Corrosion Protection

0= None

C= Corrosion Protection

Code 20: Disconnect Switch

0= None

D= Disconnect Switch

Code 21: Always 0

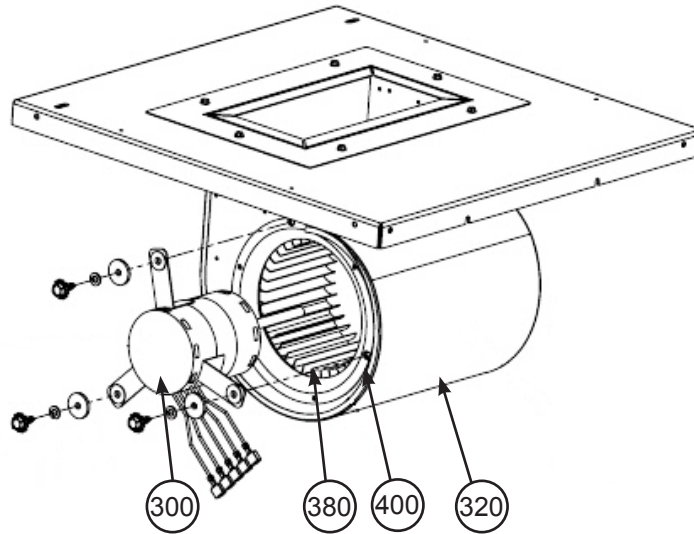
Code 22: Extended Warranty

Electrical Legend

AN1, AN2	LED Annunciator
CO1	Fan Motor Capacitor 1
C11	Compressor Capacitor 1
CP1	Compressor 1
COE	Condensate Overflow Protection Sensor - WSE
COS	Condensate Overflow Protection Sensor
DAT	Discharge Air Temperature Sensor
DCS	Disconnect Switch
EB1	Expansion Control Board 1
EB2	Expansion Control Board 2- Fan Speed Control
EWT	Entering Water Temperature Sensor
FM1	Fan Motor 1
GND	Ground
HG1	Hot Gas Reheat Valve Actuator
HP1	High Pressure Switch
HYH	Hot Water Heat Valve Actuator
LAT	Leaving Air Temperature Sensor
LP1	Low Pressure Switch
LT1	Compressor Suction Line Temperature Sensor
LWT	Leaving Water Temperature Sensor
M01	Fan Motor Contactor
M11	Compressor 1 Contactor
MCB	Main Control Board
NCB	Network Control Board
OLP	Overload Protector - Compressor Motor
RAT	Return Air Temperature Sensor
RV1	Reversing Valve
TR1	Transformer - Control
TR2	Transformer - Fan Motor
WSE	Waterside Economizer Actuator

Blower Fan Assembly

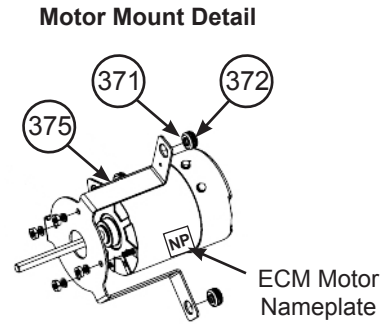
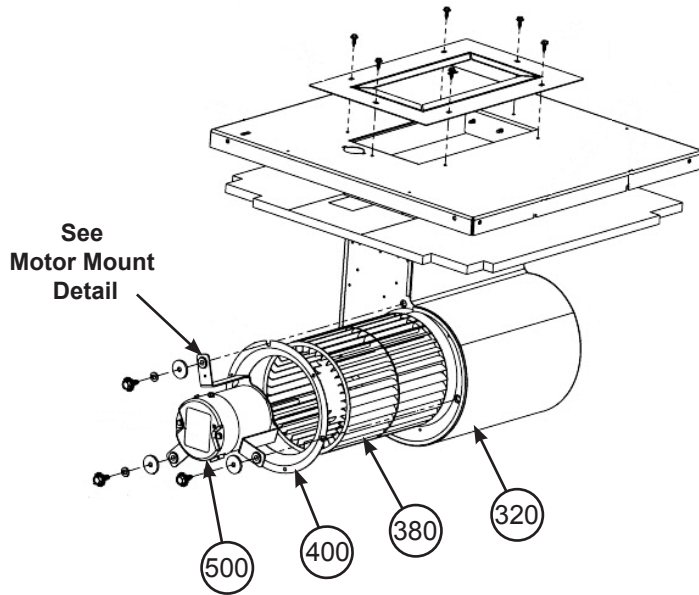
PSC Motor, Housing & Wheel



Ref. No.	Description	Part Number	007			009			012		
			115/60/1	208-230/60/1	265/60/1	115/60/1	208-230/60/1	265/60/1	115/60/1	208-230/60/1	265/60/1
300	PSC Motor, 1/12 HP	669484201	1			1			1		
	PSC Motor, 1/10 HP	669484202		1			1			1	
	PSC Motor, 1/15 HP	669484203			1			1			
	PSC Motor, 1/9 HP	910177368									1
320	Blower Housing	060699602	1	1	1	1	1	1	1	1	1
380	Wheel, Blower, 3/8" Dia.	060628001	1	1	1	1	1	1	1	1	1
400	Inlet Ring	060629101	1	1	1	1	1	1	1	1	1

Blower Fan Assembly

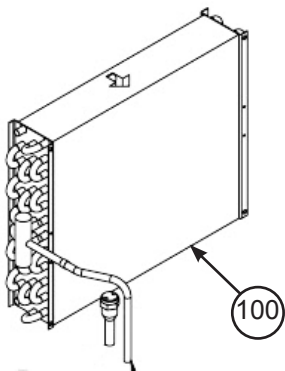
ECM Motor, Housing & Wheel



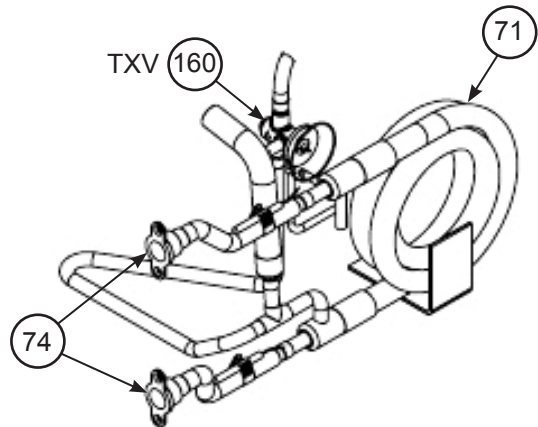
Ref. No.	Part Description	Part Number	Unit Size		
			007	009	012
320	Blower Housing	060699602	1	1	1
371	Grommet- Motor Mount Rubber	910126826	1	1	1
372	Grommet- Motor Mount Eyelet	910126827	1	1	1
375	Bracket- Motor Mount	668122101	1	1	1
380	Wheel- Blower, 5/16" Shaft	910123343	1	1	1
400	Inlet Ring	060629101	1	1	1
500	ECM & Program	1	See ECM motor nameplate.		

¹ The PN for the ECM motor is found on the label (see illustration above).
 You may also contact Daikin with the Unit Model & Serial Number to get the ECM Motor part number.

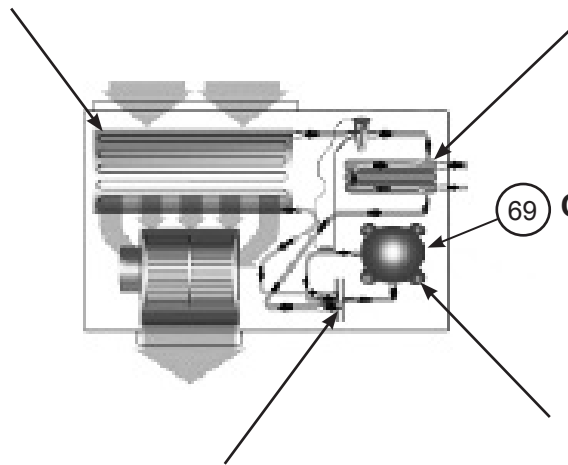
Refrigeration Circuit Diagrams



Evaporator Detail

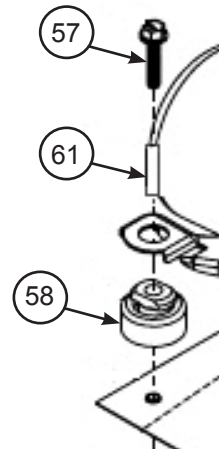


CO-AX HEAT EXCHANGER Detail

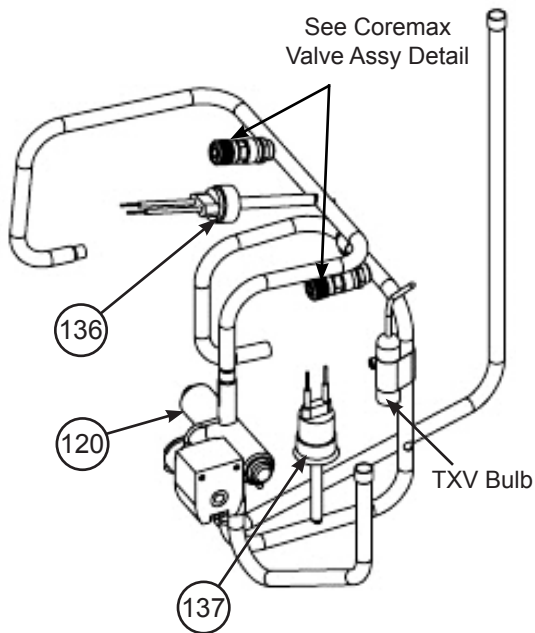


Reversing Valve Piping Detail

69 Compressor

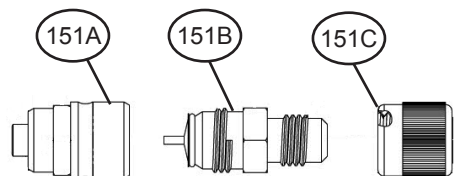


Compressor Mounting Detail



See Coremax Valve Assy Detail

TXV Bulb



Coremax Valve Assy Detail

Refrigeration Circuit Components

Ref. No.	Description	Part Number	007			009			012		
			115/60/1	208-230/60/1	265/60/1	115/60/1	208-230/60/1	265/60/1	115/60/1	208-230/60/1	265/60/1
57	Screw, Compressor Mount	910155795	4	4	4	4	4	4	4	4	4
58	Grommet, Compr Mount until 5/18	060623301	4	4	4	4	4	4	4	4	4
	Grommet, Compr Mount 5/18 & later	668955401	4	4	4	4	4	4	4	4	4
61	Sleeve, Compr Mount until 7/16	060623401	4	4	4	4	4	4	4	4	4
	Sleeve, Compr Mount 7/16 & later	668955501	4	4	4	4	4	4	4	4	4
69	Compressor	910151425	1								
	Compressor	910151426		1							
	Compressor	910151427			1						
	Compressor	910161439				1					
	Compressor	910161440					1				
	Compressor	910161441						1			
	Compressor	910151443							1		
	Compressor	910151444								1	
	Compressor	910102156									1
70	Overload Protector, Compressor	910179172	1								
	Overload Protector, Compressor	910179173		1							
	Overload Protector, Compressor	910179177			1			1			
	Overload Protector, Compressor	910179175				1					
	Overload Protector, Compressor	910179176					1				
	Overload Protector, Compressor	910179178							1		
	Overload Protector, Compressor	910179179								1	1
71	CO-AX Heat Exchanger, Copper Inner Tube	669814134	1	1	1	1	1	1			
	CO-AX Heat Exchanger, Copper Inner Tube	669814135							1	1	1
	CO-AX Heat Exchanger, Cupro Inner Tube	910170625	1	1	1	1	1	1			
	CO-AX Heat Exchanger, Cupro Inner Tube	910170631							1	1	1
74	Adapter	106474901	2	2	2	2	2	2	2	2	2
100	Evaporator Coil Assy, Return Air- LH ¹	670211324	1	1	1						
	Evaporator Coil Assy, Return Air- LH ¹	670211322				1	1	1	1	1	1
	Evaporator Coil Assy, Return Air- RH ¹	670211321	1	1	1						
	Evaporator Coil Assy, Return Air- RH ¹	670211323				1	1	1	1	1	1
120	Reversing Valve until 10/17	910124937	1	1	1	1	1	1	1	1	1
	Reversing Valve 10/17 & later	910198407	1	1	1	1	1	1	1	1	1
N/S	Solenoid- Reversing Valve until 10/17	106694207	1	1	1	1	1	1	1	1	1
	Solenoid- Reversing Valve 10/17 & later	910198415	1	1	1	1	1	1	1	1	1

¹ Please contact Daikin for E-Coat on evaporator coil assy.

Continued on next page.

Refrigeration Circuit Components- Continued

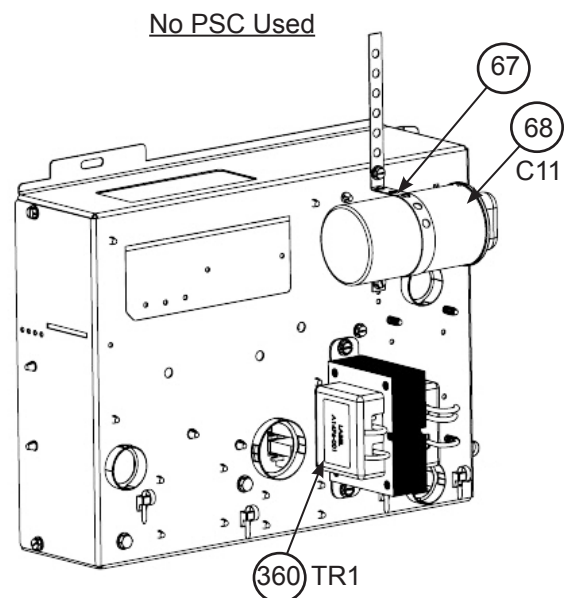
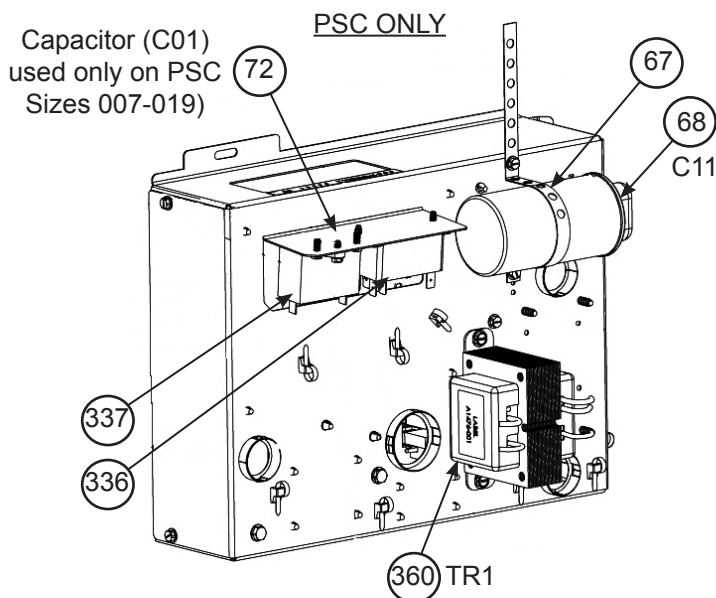
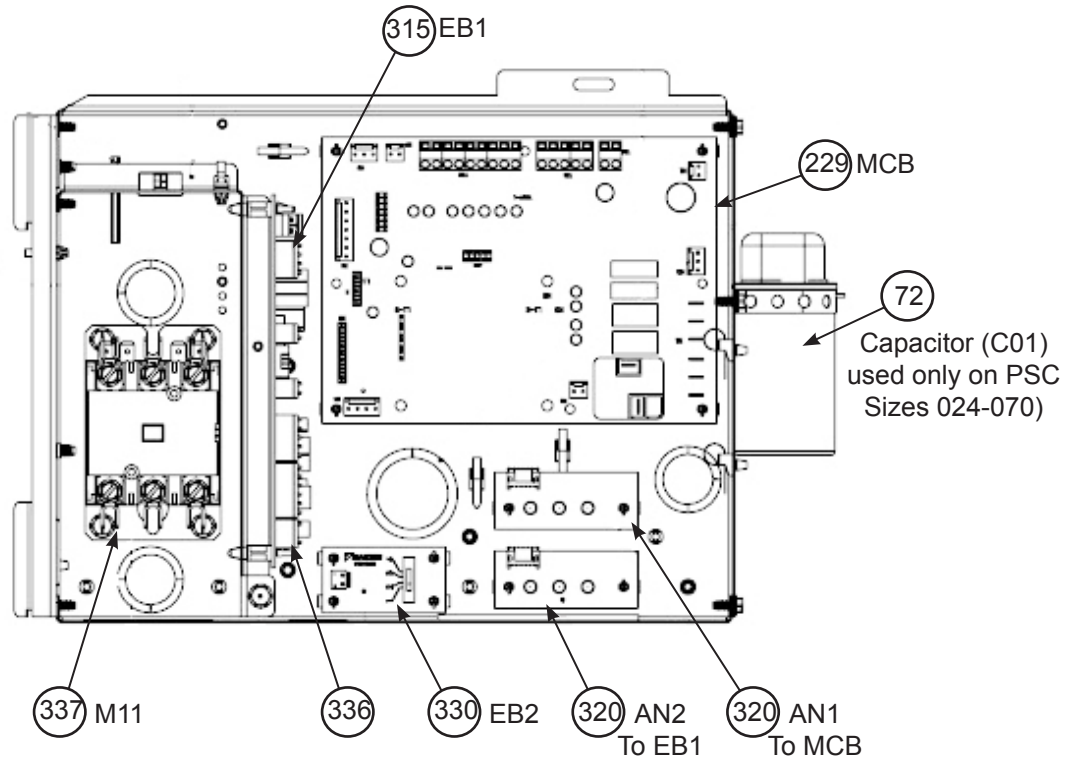
Ref. No.	Description	Part Number	007			009			012		
			115/60/1	208-230/60/1	265/60/1	115/60/1	208-230/60/1	265/60/1	115/60/1	208-230/60/1	265/60/1
136	High Pressure Switch	910171269	1	1	1	1	1	1	1	1	1
137	Low Pressure Switch until 9/16	107225101	1	1	1	1	1	1	1	1	1
	Low Pressure Switch 9/16 & later	910171267	1	1	1	1	1	1	1	1	1
151A	Seat, Fitting	910158114	2	2	2	2	2	2	2	2	2
151B	Core, Valve	668188701	2	2	2	2	2	2	2	2	2
151C	Cap, Valve	668189501	2	2	2	2	2	2	2	2	2
160	Expansion Valve	910157543	1	1	1						
	Expansion Valve	910157545				1	1	1			
	Expansion Valve	910157546							1	1	1
N/S	Drain Pan, LH	670212805	1	1	1	1	1	1	1	1	1
	Drain Pan, RH	670212804	1	1	1	1	1	1	1	1	1
N/S	Terminal Ring- Condensate Overflow Wire	802007936	1	1	1	1	1	1	1	1	1
N/S	Gasket, Vinyl Edging, 10.69"	910155307	1	1	1	1	1	1	1	1	1

N/S= Not shown.

Control Box

MicroTech III Controls

Diagrams



Control Box

MicroTech III Controls

Components

Ref. No.	Part Description	Part Number	Unit Size		
			007	009	012
67	Bracket, Capacitor	850010570	1	1	1
N/S	Boot, Capacitor Terminal Cover	910127697	1	1	1
68	Capacitor, Compressor, 35MFD 440VAC	910120050	1	1	1
	Capacitor, Compressor, 15MFD 440VAC	910120046	1	1	1
	Capacitor, Compressor, 10MFD 440VAC	910120045		1	
	Capacitor, Compressor, 20MFD 440VAC	910120047			1
72	Capacitor, 5MFD 440VAC until 9/16	668003108	1	1	1
	Capacitor, 5MFD 440VAC 9/16 & later	910181938	1	1	1
	Capacitor, 2MFD 440VAC until 9/16	668003112	1	1	1
	Capacitor, 2MFD 440VAC 9/16 & later	910181941	1	1	1
	Capacitor, 3MFD 440VAC until 9/16	668003104	1	1	1
	Capacitor, 3MFD 440VAC 9/16 & later	910181936	1	1	1
229	Control Board, MicroTech III	668105601*	1	1	1
315	I/O Expansion Board	668105702*	1	1	1
320	LED Annunciator, AN1 to MCB	668395201	1	1	1
	LED Annunciator, AN2 to EB1	668395201	1	1	1
330	Fan Speed Selection Board	910143618	1	1	1
335	Stand Off, PC Board	802028115	6	6	6
336	Relay, DPST, 24V	106500102	1	1	1
337	Contactor, 2P, 30A until 12/17	910140339	1	1	1
	Contactor, 2P, 30A 12/17 & later	910199934	1	1	1
N/S	Disconnect Switch, 10A	910150557	See footnote 1.		
	Disconnect Switch, 16A	910150558			
360	Transformer, 50V, 115V	910116204	1	1	1
	Transformer, 50V, 208-230V	910116202	1	1	1
	Transformer, 50V, 265V	910116203	1	1	1
	Transformer, 75V, 115V	910117810	1	1	1
	Transformer, 75V, 208-230V	910116213	1	1	1
	Transformer, 75V, 265V	910116209	1	1	1
N/S	Suction Line Temp Sensor (LT)	910121229	1	1	1
N/S	Air Temp Sensor (DAT, RAT)	910106325	1	1	1
N/S	Water Temp Sensor (EWT, LWT)	910121230	1	1	1

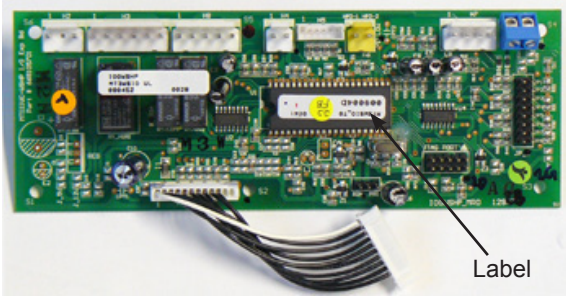



N/S= Not shown.

¹ The disconnect switch depends on the unit features. Use the As-Built BOM on Parts E-Commerce, or get the specs from the installed disconnect, or contact Daikin Applied Parts Identification.

* When ordering this board, please provide the software part number printed on the board's label. See control board photo on next page for label location.

Control Box

MicroTech III Controls

MTIII Control Board Label Locations	
 <p style="text-align: right; margin-right: 20px;">Label</p>	 <p style="text-align: right; margin-right: 20px;">Label</p>
668105702	668105901
 <p style="text-align: right; margin-right: 20px;">Label</p>	 <p style="text-align: right; margin-right: 20px;">Label</p>
668105601	668105801

NOTE: When ordering the control board, please provide the software part number printed on the board's label.
See above for label locations.

Field Installed Accessories

Filters & Filter Racks

Description	Qty	Part Number
1" Filter, Throwaway	12 Pack	300053639
2" Filter, MERV 8	12 Pack	669814413
4" Filter, MERV 13	6 Pack	669814414
Filter Rack, 2"	1 Kit	910174037
Filter Rack, 4"	1 Kit	910174055

MicroTech III Communication Modules

Description	Part Number
BacNet Comm Module Kit*	910128889
LonWorks Comm Module Kit*	910128888

* Kit includes comm module card, sensors, mounting tabs, and IM.

Motorized Valve Wire Harness

Description	Part Number
MTIII, H-8 Wire Harness Assy, ISO Control Kit	910255908
MTIII, H-8 Wire Harness Assy, ISO Control Kit, 10 Pack	910145646

Manual Valves

Description	Size	Box of 2	Box of 10
Combination Shutoff/Balancing Valve with Memory Stop, Ball Valve	1/2"	106065102	106065110

Motorized Valves

Description	Kit *	Actuator	Body
2-Way Valve Kit, Motorized, Normally Closed (NC), 1/2" NPT	910131353	910129596	910129296
2-Way Valve Kit, Motorized, Normally Closed (NC), 1/2" Sweat	910131359	910129596	910129293
2-Way Valve Kit, Motorized, Normally Open (NO), 1/2" NPT	910128986	910129299	910129296
2-Way Valve Kit, Motorized, Normally Open (NO), 1/2" Sweat	910131356	910129299	910129293

* Refer to IM 1151 for installing a motorized valve kit on MicroTech III units.

Field Installed Accessories Continued

Thermostats & Sensors

Description	Part Number
3.75" x 5.5" Adaptor Plate *	910201987
5.25" x 7" Adaptor Plater *	910193064
5.3" x 5.3" Adaptor Plate *	910201988
RCN Kit for use with wireless Tstat	910107248
Programmable/ Non- Programmable, 2H/2C, AC, Touchscreen	910193126
Programmable/ Non- Programmable, 2H/2C, AC, Touchscreen, WIFI	910193131
Wall Stat: Non- Programmable, 2 Heat/2 Cool, ACO, Hardwired	910121746
Wall Stat: 7-day Programmable, 2 Heat/2 Cool, ACO, Hardwired	910121748
Wall Stat: Auto, Programmable Touch-Screen, 3 Heat/2 Cool, Humidity Detection	910121750
Wall Stat: Programmable & Remote Sensor	910116773
Wall Stat: AC/DC, ACO, 7-day Programmable, 2 Heat/2 Cool with Wall Plate	668375301
Wall Stat: AC/DC, ACO, Non- Programmable, 2 Heat/2 Cool, NSB & OR with Wall Plate	668375401
Trim Ring *	910193063
Insulated Wall Plate	910116770
Basic Room Sensor with NSB, Override and Status LED	910152149
Digital Adj. 4-Button Room Sensor with Override, Occupancy Switch and Temp. Display	910152147
Sensor with Cool/Warm Temp Adj. and Occupaancy Override	910171464
Remote Sensor, Outdoor Temp for Touch Screen Thermostat **	910129096
Remote Sensor, Indoor Temp for Touch Screen Thermostat **	910129095
Wall Temp Sensor for 668375301 & 668375401	107096010
Wall Sensor, Adj. Cool/Warm, Occupancy Switch	910121753
Room Sensor, Digitally Adj., Temp & Humidity Display	910121754
Wall Temp Sensor, Daikin Branded ***	667720401

* For sensors p/ns 910121754, 910152147, 910152149 or 910171464.

** For use with thermostats # 910121750.

*** For use with thermostats # 910121746 & # 910121748.

TStat Guards

Description	Part Number
TStat Guard	105571101
TStat Guard (10 Pack)	105571110

Field Installed Accessories Continued

Hoses

Description	Specification	2 Foot	3 Foot
Hose Kit, Fire Rated Condensate	3/4"	106063801	106063901
Hose Kit, Plastic Condensate	3/4"	106063701	106665101
Hose Kit, Fire Rated Supply/Return (2 Pack)	1/2"	106062801	106063101
Auto Flow Supply and Return w/Ball Valves Flow Control Hose Kit, Fire Rated Supply/Return- 1/2" Includes: Supply Line: Ball valve with one port and a 24" stainless steel hose with swivel. Return Line: Combination flow controller & ball valve with two ports and a 24" stainless steel hose with swivel.	1.0 GPM	669482302	N/A
	1.5 GPM	669482303	N/A
	2.0 GPM	669482304	N/A
	2.5 GPM	669482305	N/A
	3.0 GPM	669482306	N/A
	3.5 GPM	669482307	N/A
	4.0 GPM	669482308	N/A
Auto Flow Supply and Return w/Ball Valves and Strainer Flow Control Hose Kit, Fire Rated Supply/Return- 1/2" Includes: Supply Line: Combination ball valve & y-strainer, blow down valve, with one port and a 24" stainless steel hose with swivel. Return Line: Combination flow controller & ball valve with two ports and a 24" stainless steel hose with swivel.	1.0 GPM	106582902	910186311
	1.5 GPM	106582903	910186312
	2.0 GPM	106582904	910186313
	2.5 GPM	106582905	910160444
	3.0 GPM	106582906	910157026
	3.5 GPM	106582907	910186314
	4.0 GPM	106582908	910160445
Hose Kit, Supply and Return w/Ball Valves	1/2"	669483401	669481302
Hose Kit, Supply and Return w/Ball Valves and Strainer	1/2"	669481801	669481802
Hose Kit, Jumper Hose Kit w/90° Adapter	1/2" x 4 Ft.	669483101	

N/A = Not Applicable.

Note: Refer to IM 1226 for Daikin Fire Rated Hoses & Hose Kits and for installation instructions.

Waterside Economizer

Description	Part Number
3-Way Valve, Motorized, .625" Sweat	107179701
WSE Coil Assy	670213502
Actuator Motor, NC, 24V	107179809

Hydronic Heat

Description	Part Number
Actuator, 24V	107179801
Hydronic Coil Assy	670226306

Field Installed Accessories Continued

MicroTech III Temperature Sensors

Part Number	Kit	Tenant Override	Setpoint Adjustment	Status LED	Fan & Mode Switch
669088101	669529001	Yes	No	No	No
668900801	669529101	Yes	55° to 95°F (12° to 35°C)	Yes	Yes
669088201	669529201	Yes	-3° to +3°F (-1.5° to 1.5°C)	No	Yes

Note: Can only be used in conjunction with a communication (Comm.) card. See OM 931 for required jumper settings.

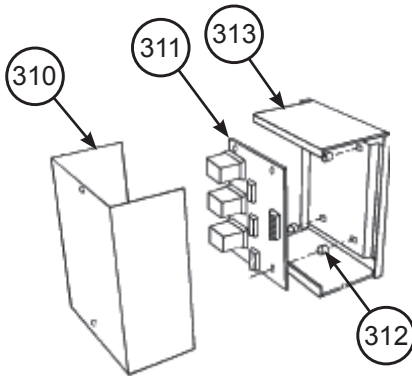
MicroTech III Unit Control Accessories

Description	Part Number
** Multiple Unit Control Panel: Allows a master unit controlled by a T'Stat, to operate up to 3 secondary units Not Recommended for use with a Boilerless System Kit.	056794201
Boilerless System Kit with I/O Expansion Board *	910110355
Boilerless System Kit without I/O Expansion Board	910110353

* IM 1084-2 is included in Kit.

** Kit components listed below.

Multiple Unit Control Panel Kit



Ref. No.	Description	Part Number	Qty.
310	Cover, Control Box	106436101	1
311	Circuit Board	056794001	1
312	Stand Off, Circuit Board	802028090	6
313	Box	850007827	1

Critical Daikin Applied OEM Parts Are What Your HVAC Unit Needs!

Daikin SmartSource® Compact Vertical WSHP

WGCV

007, 009, 012 Design 1

Critical Components	Unit Sizes	Voltage	Part Number
Control			
Control Board, MicroTech III	ALL	ALL	668105601
Compressor			
Compressor	007	115/60/1	910151425
Compressor	007	208-230/60/1	910151426
Compressor	007	265/60/1	910151427
Compressor	009	115/60/1	910161439
Compressor	009	208-230/60/1	910161440
Compressor	009	265/60/1	910161441
Compressor	012	115/60/1	910161443
Compressor	012	208-230/60/1	910161444
Compressor	012	265/60/1	910102156
Blower Fan Motor			
Motor, 1/12 HP	007, 009, 012	115/60/1	669484201
Motor, 1/10 HP	007, 009, 012	208-230/60/1	669484202
Motor, 1/15 HP	007, 009	265/60/1	669484203
Motor, 1/9 HP	012	265/60/1	910177368
ECM & Program	ALL	ALL	See motor nameplate
Blower Fan Assembly			
Blower Housing Assy	ALL	N/A	060699602
Wheel, Blower, 3/8"	ALL	N/A	060628001
Wheel, Blower, 5/16"	ALL	N/A	910123343
Sensor			
Suction Line Temp Sensor (SLTS)	ALL	N/A	910121229
Air Temp Sensor (DAT, RAT)	ALL	N/A	910106325
Water Temp Sensor (EWT, LWT)	ALL	N/A	910121230

Call Your Local Daikin Applied Parts Distributor For All Your Parts Needs.
To Locate A Distributor, Go To www.DaikinApplied.com or Call 1-800-37PARTS